

Full List – Artists

Inhabitants

We share our lives with others. Microbes, particles, molluscs, cats and dogs. Animals, and those considered other to humans collectively. These living entities ask, for sensitivity in their interactions with us, and how we represent them to others. They ask that we care for their environment and habitats.

Inhabitants is an online exhibition that includes artworks by twelve artists who give thoughtful and sensitive attention and detail to their encounters with animals, and those considered not human, and how they are represented with care. The artists, from the UK, USA, Finland, Denmark, Sweden and Iceland, offer artworks that speak to a language of care and caretaking, of caregiving and duty of care in their visual encounters with other species and the natural environment.

Inhabitants is the companion online exhibition to the *(Re)Common World III – Negotiating and Inhabiting Boundaries: Aesthetics conference*, 4-6 October 2023 at University of Oulu (Finland). They are produced from the collaboration between animal studies researchers at University of Derby (UK), the University of Oulu and the Finnish Society for Human/Animal Studies.

Inhabitants is curated by [Angela Bartram](#) from the University of Derby (UK).



Liina Aalto-Setälä

Liina Aalto-Setälä is a multidisciplinary visual artist based in Helsinki, Finland. Her primary mediums are cinema, photography, graphics and sound. She has a Master of Arts degree from the Department of Photography at Aalto University, Aalto. She has participated in several group exhibitions, as well as solo exhibitions in Finland and Turkey. Her most recent exhibition takes place in Gallery Harno, Helsinki, in November 2023. In addition to her artistic work, Aalto-Setälä is also part of the *Kosmos* Collective, which uses art space in Helsinki from 2020-2023.

[MORE DETAILS](#)



Steve Baker & Cath Clover

Steve Baker is a Norwich-based artist and writer, and is Executive Professor of Art History at the University of Central Lancashire, UK. He co-curated the online exhibition *Animals for the previous EAPCommon World II conference* and co-organised the conference with Ang Bartram. He is the author of three books in the field of animal Studies, and his artwork has been exhibited in the UK, USA, Europe and Australia.

Catherine Clover's multidisciplinary practice addresses communication through voice, language and the interplay between hearing/hearing, seeing/hearing, using field recording, digital imaging and the spoken/written word she explores an expanded approach to language within and across species through a framework of everyday experience. Clover lives between London, UK, and Nauru/Melbourne, Australia, on the traditional lands of the Warramiri and Binu Warramiri peoples of the Ruku Nation. Her work has been exhibited and performed regularly both within Australia, the UK, and internationally since the 90s.

[MORE DETAILS](#)



Angela Bartram

Angela Bartram is an artist and artistic researcher working with objects, sound, video, print, creative performance events and published text, concerning the bodies of the human body, gallery or museum, definitions of the human and animal and the effects of exploring and engaging creatively with comparable human, and appropriate strategies for documenting the ephemeral. She is Professor of Contemporary Art and Co-Lead of the Creative and Cultural Research: Theme and Research Centre at the University of Derby, and has a PhD from Middlesex University.

[MORE DETAILS](#)



Lee Deigaard

Lee Deigaard explores the topographies where one creature encounters another, describing landscapes above things and references to its animal protagonists, their sensory and imaginative worlds and their autonomy. With language, photography/video, installation, event, and drawing, he work approaches the animal from positions of empathy, collaboration, and mutual curiosity and looks at multi-species empathy, mutual cognition and personality, sensory processes of memory and grief, and the sense of intimacy. As an independent artist and researcher based in urban Louisiana and rural Georgia, she has exhibited and presented her work internationally.

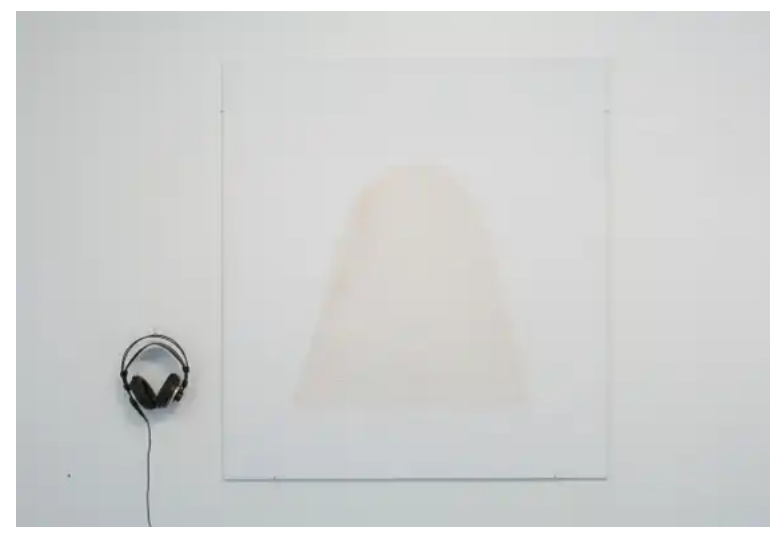
[MORE DETAILS](#)



Jaana Erkkila-Hill

Jaana Erkkila Hill is the Vice Rector for Research at the University of the Arts Helsinki. She also holds a Professorship in Fine Art at the University of Lapland. She graduated with Master of Fine Arts from the Academy of Fine Arts Helsinki and a Doctor of Arts from Aalto University. Her research interests in artistic research in the field of artistic thinking, interaction between human and non-human world, and artistic pedagogy. In addition to her academic career she is active as an artist. Her work is held in several public and private collections.

[MORE DETAILS](#)



Outimajja Hakala

Outimajja Hakala is a visual artist (analyst) and art historian from the University of Lapland and the University of Oulu. Currently they are a doctoral candidate in Aalto OSTS – University of Arts and Design. They practice how to consider non-human animals in visual art through their artistic research.

[MORE DETAILS](#)



Johanna Hällsten

Dr. Johanna Hällsten is a Swedish artist and Creative Leader for BA Fine Art at London Metropolitan University, UK. She works primarily with text, sound and performance, where the work focuses on translation between different cultures, species, and forms, to address the interrelations between sounds and environments. Her work was performed at Nottingham Contemporary as part of *Relinquish to Journeys*, and exhibited in e.g. Personal Structures, Street Biennale, Sandstone Zoo's Confrontation Hong Kong, See-See China Exhibition Gallery, ANTI Festival, TIVA. She has published in e.g. *The Front Edge of Environmental Aesthetics*, *Contemporary Architecture*, *Sustainable*, *U+U Journal*, and in a *Paradise*.

[MORE DETAILS](#)



Riina Hannula

Riina Hannula is an artist working with visual art, video, and installation. They conduct doctoral research in sociology within a Merit-based Living Practices of New Human-Microbial Cultures project that seeks to understand agency beyond biology. Their artistic and academic practice stems from multi-species care and produces visual poetic assemblages with a more-than-human world. Riina's work is done in socially relevant settings, collaborations with a more-than-human world to the degree that the knowledge, creativity and care are acknowledged to reside within the distributed agencies and not solely human design.

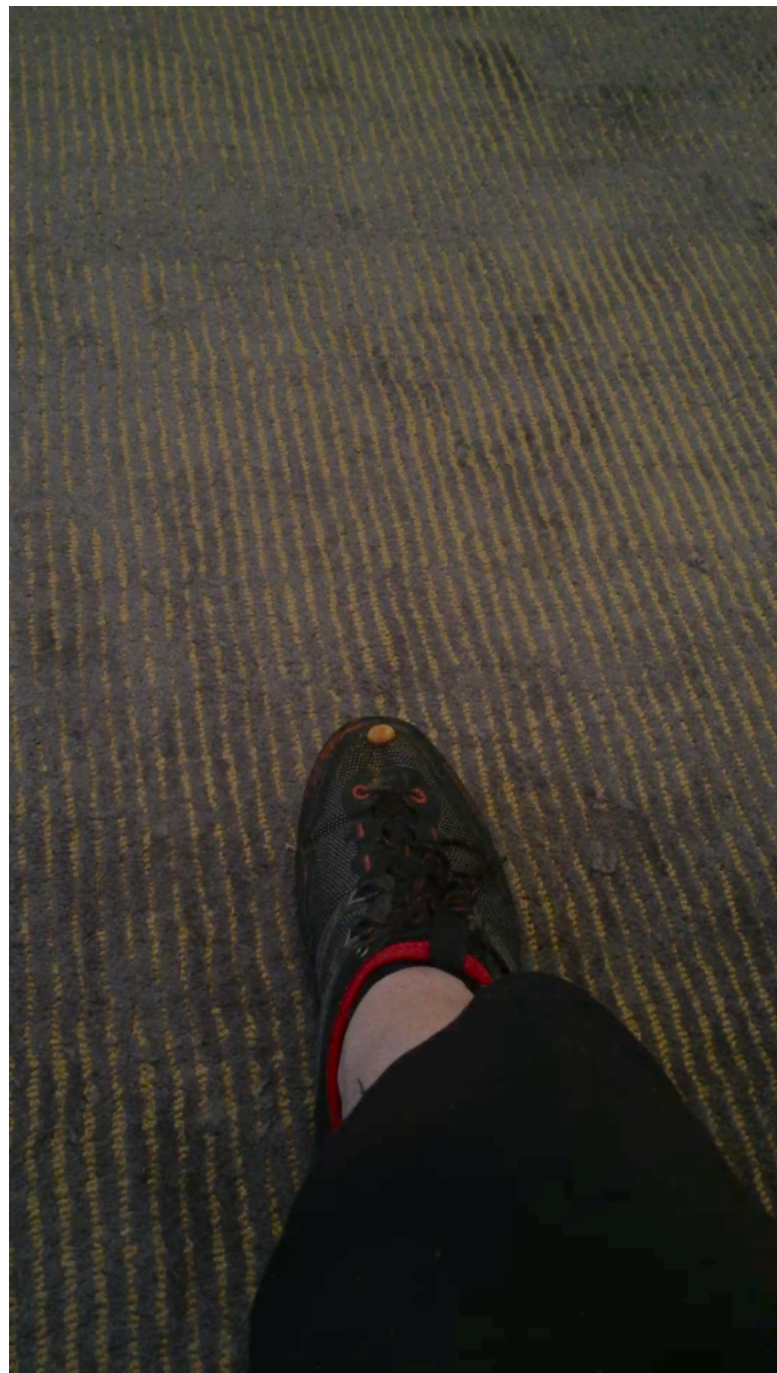
[MORE DETAILS](#)



Oona Leinovirtanen

Oona Leinovirtanen is an artist using working with installation, sculpture, movement, video, and weaving. Besides that Leinovirtanen conducts doctoral research in sociology. Nowadays her interest circulates among gardening, ceramics, improvisation, and gut feelings. Her dream is to be outdoors and more less in an upright position.

[MORE DETAILS](#)



Rosemarie McGoldrick

Rosemarie McGoldrick is a London-based artist working in all media, who also teaches on and leads the MFA course at London Metropolitan University. Her drawings and sculptures are floor- and wall-based works, calling on art traditions of monumentality, duration and the monochrome. Her subjects range from style, decoration and monumentality to animals, landscape and geology.

She has organised three conferences and art exhibitions at London Met around art and animal-human studies – the *Animal Care (2020)*, *The Animal Care Renewed (2021)* and the *Animal Care Connected (2022)*.

[MORE DETAILS](#)



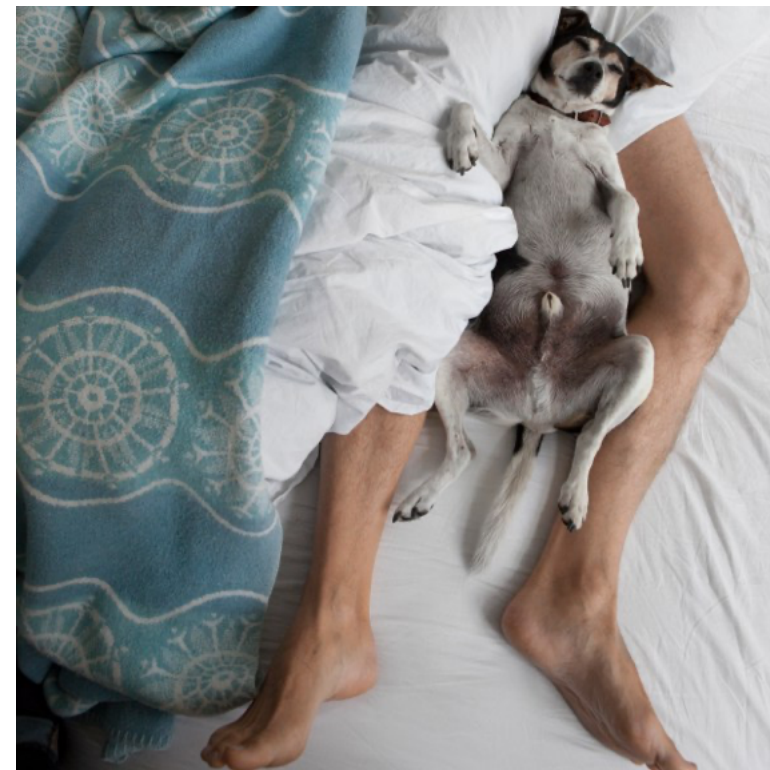
Bryndis Snæbjörnsdóttir & Mark Wilson

Mark Wilson and Bryndis Snæbjörnsdóttir are a collaborative art partnership. Their 22-year interdisciplinary art practice explores and tests human and more-than-human relational behaviours within specific locations, within a context of environmental change.

Working very often in close consultation in the field, with experts including professionals and amateurs, they use their work to test cultural constructs and tropes, and human behaviour in respect of ecological extinction, conservation, and the environment. Their artwork is installation-based using a variety of media, including photography, video, text, drawing, objects and sound.

Bryndis Snæbjörnsdóttir is Professor of Fine Art at the Iceland University of the Arts and **Mark Wilson** is Emeritus Professor at the Institute of the Arts, University of Cumbria, UK.

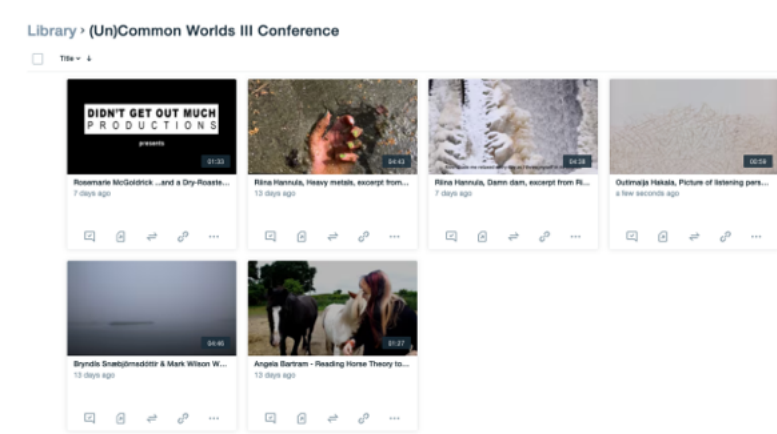
[MORE DETAILS](#)



Lisa Strömbeck

Lisa Strömbeck is a Swedish born artist, living in Denmark where she got her education at the Royal Danish Academy of Fine Arts. Since the 1990s, she has created video-film and photo series, focusing on the human relationship with other animals. Packs of stray dogs, as well as her own dogs and other domestic animals play important roles in the work. Her work is part of private and public collections including Moderna Museet in Stockholm and the Swedish and The Danish Art Councils.

[MORE DETAILS](#)



ARTIST VIDEO

Where artists have contributed video/moving image pieces to represent their work, there is a link to each piece on their individual pages.

The full library of moving image material is also available directly on Vimeo

[VIDEO LIBRARY](#)